

LCD Digital Colour TV

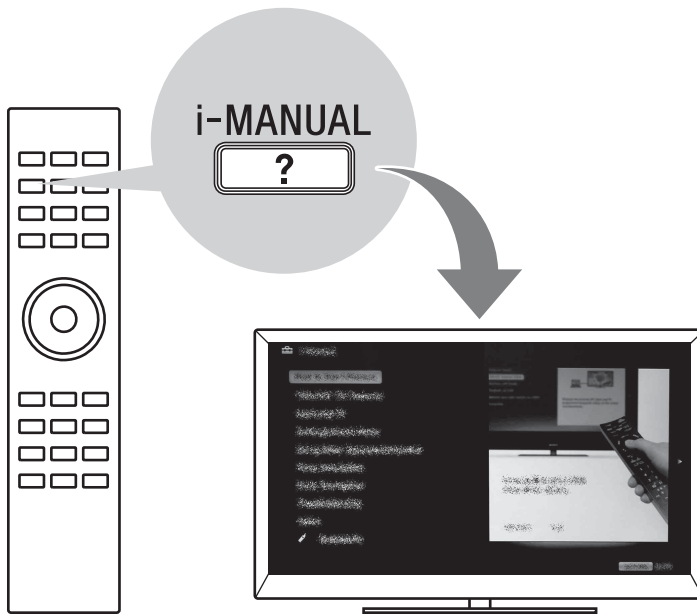
Operating Instructions

Getting Started

Using Your BRAVIA TV

Network Setup

Additional Information



BRAVIA

Introduction

Thank you for choosing this Sony product. Before operating the TV, please read this manual thoroughly and retain it for future reference.

The manufacturer of this product is Sony Corporation, 1-7-1 Konan Minato-ku Tokyo, 108-0075 Japan. The Authorized Representative for EMC and product safety is Sony Deutschland GmbH, Hedelfinger Strasse 61, 70327 Stuttgart, Germany. For any service or guarantee matters please refer to the addresses given in separate service or guarantee documents.

Notes on Digital TV function

- Any functions related to Digital TV (DVB) will only work in countries or areas where DVB-T (MPEG-2 and H.264/MPEG-4 AVC) digital terrestrial signals are broadcast or where you have access to a compatible DVB-C (MPEG-2 and H.264/MPEG-4 AVC) cable service. Please confirm with your local dealer if you can receive a DVB-T signal where you live or ask your cable provider if their DVB-C cable service is suitable for integrated operation with this TV.
- Your cable provider may charge a fee for their services, or require you to agree to its terms and conditions of business.
- This TV set complies with DVB-T and DVB-C specifications, but compatibility with future DVB-T digital terrestrial and DVB-C digital cable broadcasts are not guaranteed.
- Some Digital TV functions may not be available in some countries/areas and DVB-C cable may not operate correctly with some providers.



- The “x” that appears in the model name corresponds to a numeric digit, related to design, colour or TV system.
- Instructions about “Installing Wall Mount Bracket” are included within this TV’s instructions manual.
- The illustrations used in this manual may differ depending on your TV model.
- The illustrations of the remote used in this manual are of the RM-ED044 unless otherwise stated.
- Before operating the TV, please read “Safety Information” (page 34). Retain this manual for future reference.

Trademark information

DVB is a registered trademark of the DVB Project.

HDMI, the HDMI Logo, and High-Definition Multimedia Interface are trademarks or registered trademarks of HDMI Licensing LLC in the United States and other countries.

DLNA®, the DLNA Logo and DLNA CERTIFIED® are trademarks, service marks, or certification marks of the Digital Living Network Alliance.

DivX® is a video file compression technology, developed by DivX, Inc.

DivX®, DivX Certified®, and associated logos are trademarks of DivX, Inc. and are used under license.

ABOUT DIVX VIDEO: DivX® is a digital video format created by DivX, Inc. This is an official DivX Certified device that plays DivX video. Visit www.divx.com for more information and software tools to convert your files into DivX video.

ABOUT DIVX VIDEO-ON-DEMAND: This DivX Certified® device must be registered in order to play DivX Video-on-Demand (VOD) content. To generate the registration code, locate the DivX VOD section in the device setup menu. Go to vod.divx.com with this code to complete the registration process and learn more about DivX VOD.

Manufactured under license from Dolby Laboratories. Dolby and the double-D symbol are trademarks of Dolby Laboratories.

“BRAVIA” and BRAVIA are trademarks of Sony Corporation.

TrackID is a trademark or registered trademark of Sony Ericsson Mobile Communications AB.

Music and video recognition technology and related data are provided by Gracenote®. Gracenote is the industry standard in music recognition technology and related content delivery. For more information, please visit www.gracenote.com.

CD, DVD, Blu-ray Disc, and music and video-related data from Gracenote, Inc., copyright © 2000-present Gracenote. Gracenote Software, copyright © 2000-present Gracenote. One or more patents owned by Gracenote apply to this product and service. See the Gracenote website for a nonexhaustive list of applicable Gracenote patents. Gracenote, CDDB, MusicID, MediaVOCS, the Gracenote logo and logotype, and the “Powered by Gracenote” logo are either registered trademarks or trademarks of Gracenote in the United States and/or other countries.

Opera® Browser from Opera Software ASA. Copyright 1995-2010 Opera Software ASA. All rights reserved.

DiSEqC™ is a trademark of EUTELSAT. This TV supports DiSEqC 1.0. This TV is not intended for controlling motorized antennas.



**For KDL-46/40/32EX729,
KDL-46/40/32EX728,
KDL-46/40/32EX727,
KDL-46/40/32EX726,
KDL-26/24/22EX325:**

Notice for Wireless Signal

1. Hereby, Sony, declares that this unit is in compliance with the essential requirements and other relevant provisions of Directive 1999/5/EC.

To obtain the declaration of conformity (DoC) for R&TTE Directive, please access the following URL address.

<http://www.compliance.sony.de/>



2. Notice for customers: the following information is only applicable to equipment sold in countries applying EU directives.

TV wireless system may be operated in following countries:

Austria, Belgium, Bulgaria, Cyprus, Czech Republic, Denmark, Estonia, Finland, France, Germany, Greece, Hungary,

Iceland, Ireland, Italy, Latvia, Liechtenstein, Lithuania, Luxembourg, Malta, The Netherlands, Norway, Poland, Portugal, Slovak Republic, Romania, Slovenia, Spain, Sweden, Switzerland, Turkey, and The United Kingdom.

This equipment can be operated in other non-European countries.

TV Wireless System - Regulation Information

For Customers in Italy

- with respect to private use, by the Legislative Decree of 1.8.2003, no. 259 ("Code of Electronic Communications"). In particular Article 104 indicates when the prior obtainment of a general authorization is required and Art. 105 indicates when free use is permitted;
- with respect to the supply to the public of the RLAN access to telecom networks and services (e.g. TV wireless system), by the Ministerial Decree 28.5.2003, as amended, and Art. 25 (general authorization for electronic communications networks and services) of the Code of electronic communications

For Customers in Norway

Use of this radio equipment is not allowed in the geographical area within a radius of 20 km from the centre of Ny-Ålesund, Svalbard.

For Customers in Cyprus

The end user must register the RLAN (or WAS or WiFi) devices in the Department of Electronic Communications (P.I. 365/2008 and P.I. 267/2007).

P.I. 365/2008 is the Radiocommunications (Categories of Stations Subject to General Authorization and Registration) Order of 2008.

P.I. 267/2007 is the General Authorization for the use of Radiofrequencies by Radio Local area Networks and by Wireless Access Systems, including Radio Local Area Networks (WAS/RLAN).

For Customers in France

The WLAN (WiFi) feature of this LCD Digital Colour TV shall exclusively be used inside buildings. Any use of the WLAN (WiFi) feature of this LCD Digital Colour TV outside of the buildings is prohibited on the French territory. Please make sure that the WLAN (WiFi) feature of this LCD Digital Colour TV is disabled before any use outside of the buildings. (ART Decision 2002-1009 as amended by ART Decision 03-908, relating to radio-frequencies use restrictions).

Location of the identification label

Labels for Model No., Production Date (month/year) and Power Supply rating (in accordance with applicable safety regulation) are located on the rear of the TV or package.

Precautions

Viewing the TV

- Some people may experience discomfort (such as eye strain, fatigue, or nausea) while watching 3D video images or playing stereoscopic 3D games. Sony recommends that all viewers take regular breaks while watching 3D video images or playing stereoscopic 3D games. The length and frequency of necessary breaks will vary from person to person. You must decide what works best. If you experience any discomfort, you should stop watching the 3D video images or playing stereoscopic 3D games until the discomfort ends; consult a doctor if you believe necessary. You should also review (i) the instruction manual of any other device or media used with this television and (ii) our website (<http://www.sony-europe.com/myproduct>) for the latest information. The vision of young children (especially those under six years old) is still under development. Consult your doctor (such as a pediatrician or eye doctor) before allowing young children to watch 3D video images or play stereoscopic 3D games. Adults should supervise young children to ensure they follow the recommendations listed above.
- Do not use, store, or leave the 3D Glasses or the battery near fire, or in places with a high temperature, e.g., in direct sunlight, or in sun-heated cars.
- When using the simulated 3D function, please note that the displayed image is modified from the original due to the conversion done by this television.
- View the TV in moderate light, as viewing the TV in poor light or during long period of time, strains your eyes.
- When using headphones, adjust the volume so as to avoid excessive levels, as hearing damage may result.

LCD Screen

- Although the LCD screen is made with high-precision technology and 99.99% or more of the pixels are effective, black dots may appear or bright points of light (red, blue, or green) may appear constantly on the LCD screen. This is a structural property of the LCD screen and is not a malfunction.
- Do not push or scratch the front filter, or place objects on top of this TV set. The image may be uneven or the LCD screen may be damaged.
- If this TV set is used in a cold place, a smear may occur in the picture or the picture may become dark. This does not indicate a failure. These phenomena disappear as the temperature rises.
- Ghosting may occur when still pictures are displayed continuously. It may disappear after a few moments.
- The screen and cabinet get warm when this TV set is in use. This is not a malfunction.

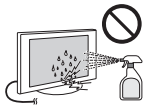
- The LCD screen contains a small amount of liquid crystal. Some fluorescent tubes used in this TV set also contain mercury (except for LED backlight LCD TV). Follow your local ordinances and regulations for disposal.

Handling and cleaning the screen surface/cabinet of the TV set

Be sure to unplug the mains lead connected to the TV set from mains socket before cleaning.

To avoid material degradation or screen coating degradation, observe the following precautions.

- To remove dust from the screen surface/cabinet, wipe gently with a soft cloth. If dust is persistent, wipe with a soft cloth slightly moistened with a diluted mild detergent solution.
- Never spray water or detergent directly on the TV set. It may drip to the bottom of the screen or exterior parts and enter the TV set, and may cause damage to the TV set.



- Never use any type of abrasive pad, alkaline/acid cleaner, scouring powder, or volatile solvent, such as alcohol, benzene, thinner or insecticide. Using such materials or maintaining prolonged contact with rubber or vinyl materials may result in damage to the screen surface and cabinet material.
- Periodic vacuuming of the ventilation openings is recommended to ensure to proper ventilation.
- When adjusting the angle of the TV set, move it slowly so as to prevent the TV set from moving or slipping off from its table stand.

Optional Equipment

- Keep optional components or any equipment emitting electromagnetic radiation away from the TV set. Otherwise picture distortion and/or noisy sound may occur.
- This equipment has been tested and found to comply with the limits set out in the EMC Directive using a connection signal cable shorter than 3 meters.

(Caution about handling the remote control)

Notes

- Observe the correct polarity when inserting batteries.
- Do not use different types of batteries together or mix old and new batteries.
- Dispose of batteries in an environmentally friendly way. Certain regions may regulate the disposal of batteries. Please consult your local authority.
- Handle the remote with care. Do not drop or step on it, or spill liquid of any kind onto it.

- Do not place the remote in a location near a heat source, a place subject to direct sunlight, or a damp room.

Wireless Function of the unit

- Do not operate this unit near medical equipment (pacemaker, etc.), as malfunction of the medical equipment may result.
- Although this unit transmits/receives scrambled signals, be careful of unauthorised interception. We cannot be responsible for any trouble as a result.

Disposal of the TV set



Disposal of Old Electrical & Electronic Equipment (Applicable in the European

Union and other European countries with separate collection systems)

This symbol on the product or on its packaging indicates that this product shall not be treated as household waste. Instead it shall be handed over to the applicable collection point for the recycling of electrical and electronic equipment. By ensuring this product is disposed of correctly, you will help prevent potential negative consequences for the environment and human health, which could otherwise be caused by inappropriate waste handling of this product. The recycling of materials will help to conserve natural resources. For more detailed information about recycling of this product, please contact your local Civic Office, your household waste disposal service or the shop where you purchased the product.



Disposal of waste batteries (applicable in the European Union and other European

countries with separate collection systems)

This symbol on the battery or on the packaging indicates that the battery provided with this product shall not be treated as household waste. On certain batteries this symbol might be used in combination with a chemical symbol. The chemical symbols for mercury (Hg) or lead (Pb) are added if the battery contains more than 0.0005% mercury or 0.004% lead. By ensuring these batteries are disposed of correctly, you will help prevent potentially negative consequences for the environment and human health which could otherwise be caused by inappropriate waste handling of the battery. The recycling of the materials will help to conserve natural resources. In case of products that for safety, performance or data integrity reasons require a permanent connection with an incorporated battery, this battery should be replaced by qualified service staff only. To ensure that the battery will be treated properly, hand over the product at end-of-life to the applicable collection point for the recycling of electrical and electronic equipment. For all other batteries, please view the section on how to remove the battery from the product safely. Hand the battery over to the applicable collection point for the recycling of waste batteries. For more detailed information about recycling of this product or battery, please contact your local Civic Office, your household waste disposal service or the shop where you purchased the product.

Table of Contents

Getting Started

Checking the accessories	8
Inserting batteries into the remote.....	8
1: Attaching the Table-Top Stand	9
2: Adjusting the viewing angle of the TV	10
3: Connecting an antenna (aerial)/Set Top Box/recorder (e.g. DVD recorder)	11
4: Connecting audio/video devices	12
5: Preventing the TV from toppling over.....	13
6: Organising the AC power cord (mains lead)/Bundling the cables.....	13
7: Performing the initial set-up	14

Using Your BRAVIA TV

Watching the TV.....	16
Selecting various functions and settings (Home Menu)	18
Displaying Operating Instructions (i-Manual)	20

Network Setup

Preparing a wired network	22
Preparing a wireless LAN.....	22
Setting up the Internet connection	23
If you cannot connect to the Internet.....	24
Adjusting the server display settings.....	24

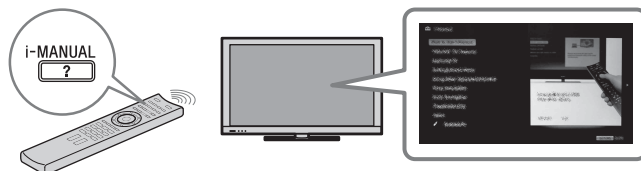
Additional Information

Troubleshooting	25
Specifications	26
Installing the Accessories (Wall-Mount Bracket).....	30
Safety Information	34

After setting up your BRAVIA TV and learning basic operations with this manual, see the built-in manual (i-Manual) for further explanation of the features of your TV.

This TV has a built-in manual (i-Manual).

To access the i-Manual, press **i-MANUAL** on the remote, and select an item. For details, see page 20 of this manual. Contents of the i-Manual may differ depending on the model/region/area.



Contents of the i-Manual

* Some models do not have this feature.

How to Use i-Manual

“BRAVIA” TV Features

- 3D Feature*
- Presence Sensor
- “BRAVIA” Internet Video
- Internet Widgets
- Wireless LAN / Wireless LAN Ready
- “BRAVIA” Sync with “Control for HDMI”
- Skype Ready
- TrackID™/Music Search/Video Search
- USB HDD Recording

Watching TV

- 3D Feature*
- Digital Electronic Programme Guide
- Favourites
- Screen Format
- Picture Mode
- Text
- Photos/Music/Videos
- Twin Picture (PIP)
- Twin Picture (P&P)
- NVOD/MF

Settings/Home Menu

- About the Home Menu
- Settings
- Display
- Sound
- System Settings
- i-Manual
- Digital Set-up
- Analogue Set-up
- External Inputs
- Network

Product Support

Using Other Equipment/ Internet

- VCR/DVD Player
- Audio System
- USB Device (e.g. Digital Camera)
- Picture Frame
- HDMI Equipment
- Internet/Wireless LAN
- Home Network
- Media Remote
- PC

Parts Description

- Remote
- TV Controls and Indicators
- Terminals

Troubleshooting

Index

Bookmarks

Getting Started

Checking the accessories

Remote (1)

Size AAA batteries (R03 type) (2)

Table-Top Stand (1)^{*1}

Fixing screws for Table-Top Stand (M5 x 16) (3)

(except KDL-26/24/22EX32x)

Fixing screws for Table-Top Stand (M4 x 12) (2)

(KDL-26/24/22EX32x only)

Assembling screws for Table-Top Stand (M6 x 14) (4)

(KDL-55/46EX72x, KDL-46HX72x, KDL-46EX52x, KDL-46CX52x only)

Assembling screws for Table-Top Stand (M6 x 14) (3)

(KDL-40HX72x, KDL-40/37/32EX72x, KDL-40/37/32EX52x, KDL-40/32CX52x, KDL-32EX42x only)

Assembling screws for Table-Top Stand (M4 x 12) (2)

(KDL-26/24/22EX32x only)

Hexagon wrench (1)

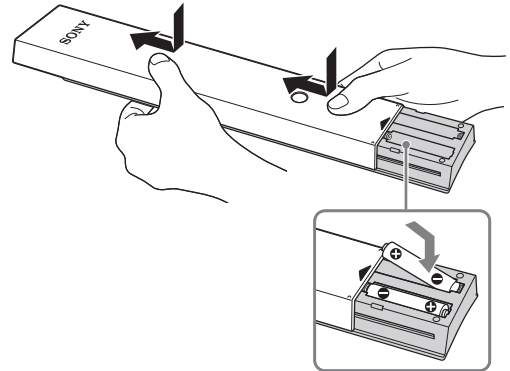
(except KDL-26/24/22EX32x)

Operating Instructions (this manual) and other documents

^{*1} Refer to the supplied Table-Top Stand leaflet to assemble the Table-Top Stand.

Inserting batteries into the remote

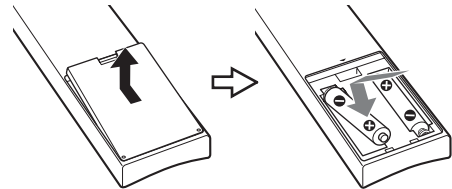
► For KDL-55/46/40/37/32EX72x, KDL-46/40HX72x



1 Remove the protection sheet.

2 Push and slide the cover upward.

► For KDL-46/40/37/32EX52x, KDL-46/40/32CX52x, KDL-32EX42x, KDL-26/24/22EX32x



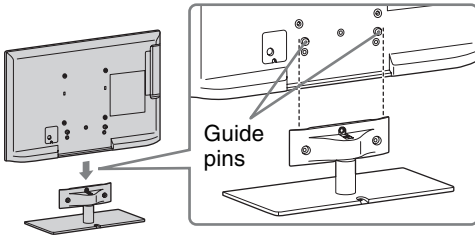
1 Remove the protection sheet.

2 Push and lift the cover to open.

1: Attaching the Table-Top Stand

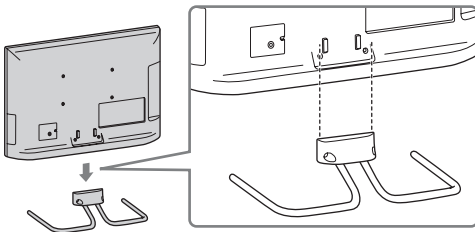
- 1 Refer to the supplied Table-Top Stand leaflet for proper attachment for some TV models.
- 2 Place the TV set on the Table-Top Stand.


- ▶ For KDL-55/46/40/37/32EX72x, KDL-46/40HX72x, KDL-46/40/37/32EX52x, KDL-46/40/32CX52x, KDL-32EX42x



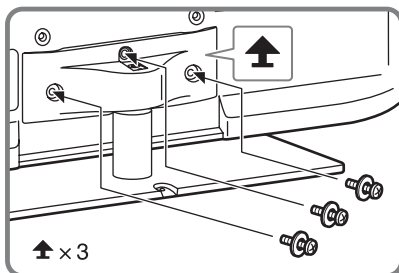
- Align the TV from the top, slide it in until the guide pins cannot be seen.

- ▶ For KDL-26/24/22EX32x

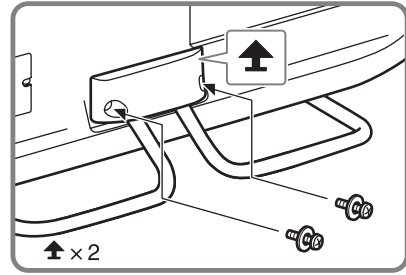


- 3 Fix the TV to the Table-Top Stand according to the arrow marks  that guide the screw holes using the supplied screws.

- ▶ For KDL-55/46/40/37/32EX72x, KDL-46/40HX72x, KDL-46/40/37/32EX52x, KDL-46/40/32CX52x, KDL-32EX42x




- ▶ For KDL-26/24/22EX32x



- If using an electric screwdriver, set the torque at approximately 1.5 N·m { 15 kgf·cm }.

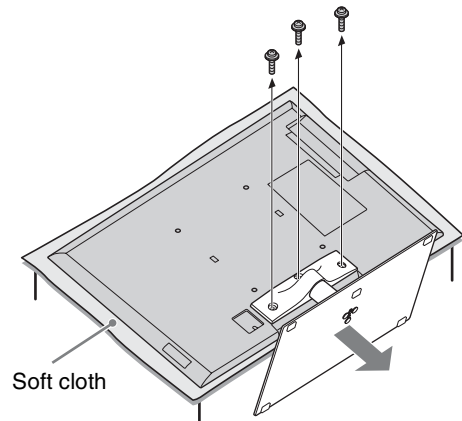
Detaching the Table-Top Stand from the TV

To detach the Table-Top Stand from the TV, remove the screws  fixed in step 3.

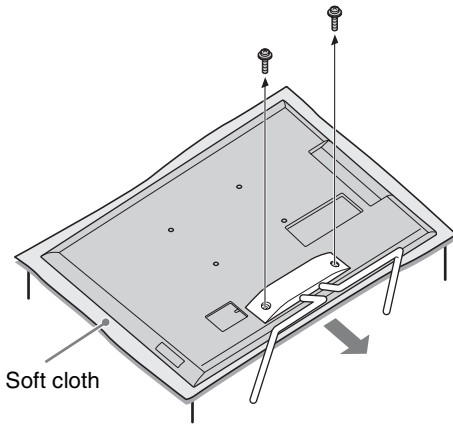


- Do not remove the Table-Top Stand for any reason other than to install corresponding accessories on the TV.
- When removing the Table-Top Stand from the TV, lay the display face down on a stable work surface that is larger than the TV.
- To prevent damaging the surface of the LCD display, make sure to place a soft cloth on the work surface.
- Be sure the TV is on the vertical position before switching on. TV set must not powered on with LCD panel face down to avoid uneven picture uniformity.

- ▶ For KDL-55/46/40/37/32EX72x, KDL-46/40HX72x, KDL-46/40/37/32EX52x, KDL-46/40/32CX52x, KDL-32EX42x



► For KDL-26/24/22EX32x



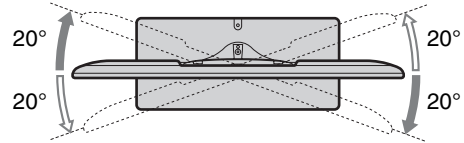
2: Adjusting the viewing angle of the TV

This TV can be adjusted within the angles as illustrated.

Angle adjustment (Swivel) (except KDL-26/24/22EX32x)



- When adjusting the angle, hold the stand with one hand to avoid having the stand slip or TV tip over.

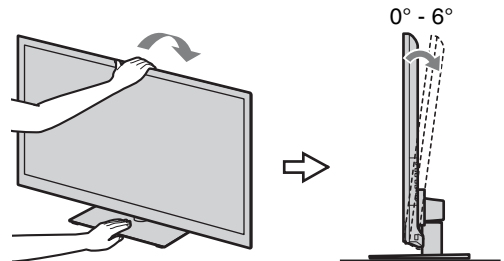


Angle adjustment (Tilt) (except KDL-46/40/32CX52x)

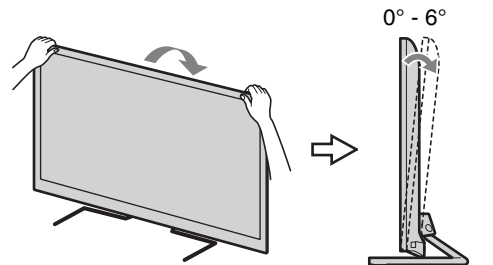


- Be careful not to pinch your fingers between the TV and stand when adjusting the angle.

► For KDL-55/46/40/37/32EX72x,
KDL-46/40HX72x,
KDL-46/40/37/32EX52x,
KDL-32EX42x



► For KDL-26/24/22EX32x





- Ensure that there are no objects in front of the TV.

IR Sensor



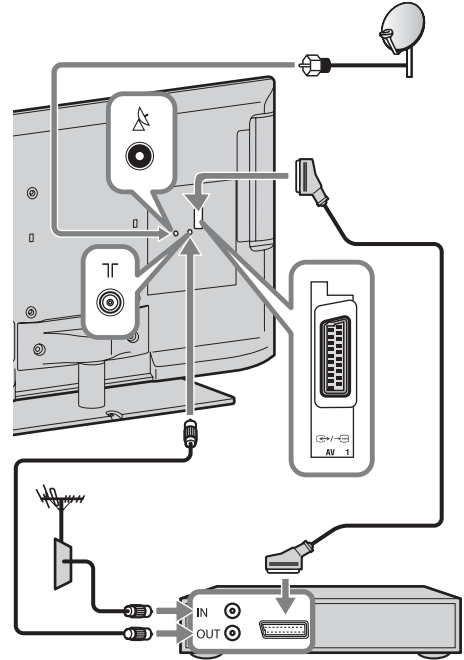
Presence Sensor

3D Sync Transmitter
(KDL-55/46/40/37/32EX72x,
KDL-46/40HX72x only)

- Do not expose the Presence Sensor to direct sunlight or other strong light, as malfunction may occur.

3: Connecting an antenna (aerial)/Set Top Box/recorder (e.g. DVD recorder)

Connecting a Set Top Box/recorder (e.g. DVD recorder) with SCART



Set Top Box/recorder (e.g. DVD recorder)

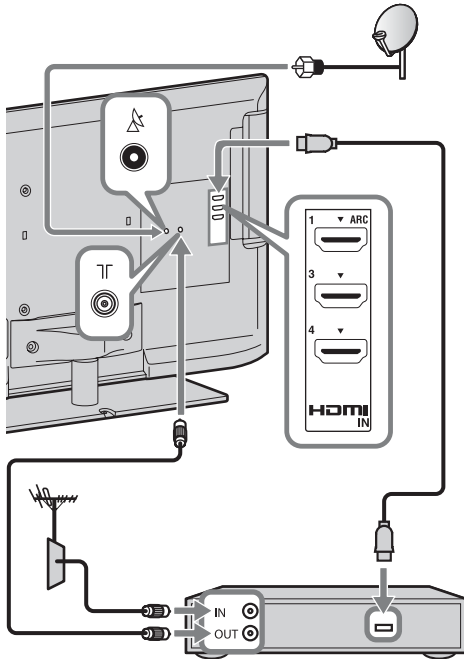


- Right Angle Type Universal SCART Lead is recommended for this connection.



- Screw the satellite connector softly with hand, do not use any tool.
- TV must be switched off when connecting satellite antenna (aerial).

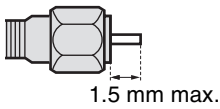
Connecting a Set Top Box/recorder (e.g. DVD recorder) with HDMI



Set Top Box/recorder (e.g. DVD recorder)

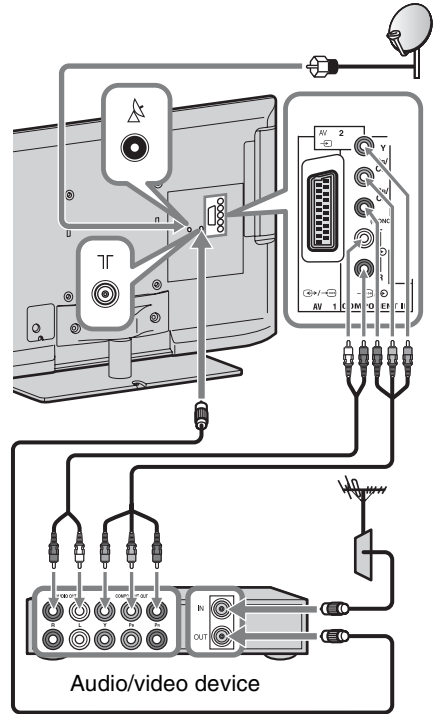
Recommendation of the F type plug

The one based on the following drawing is recommended about the F type plug. Projection of the inner wire from the connection part must be less than 1.5 mm.



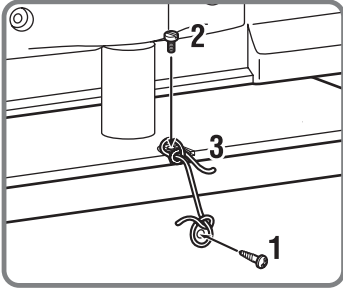
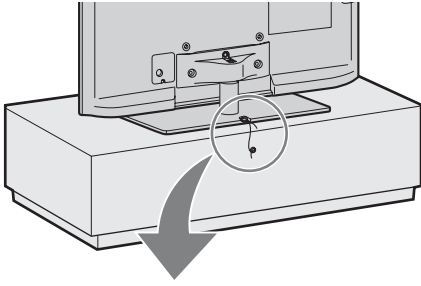
(Reference drawing of the F type plug)

4: Connecting audio/video devices



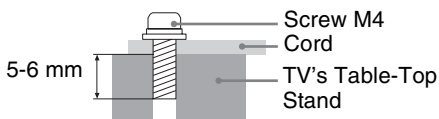
Audio/video device

5: Preventing the TV from toppling over



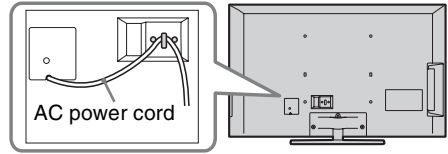
- 1** Install a wood screw (4 mm in diameter, not supplied) in the TV stand.
- 2** Install a machine screw (M4, not supplied) into the screw hole of the TV.
- 3** Tie the wood screw and the machine screw with a strong cord (not supplied).

The length of the M4 machine screw differs depending on the cord diameter.
Please refer to below illustration.



6: Organising the AC power cord (mains lead)/ Bundling the cables

► KDL-46/40/32CX52x

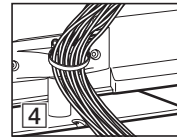
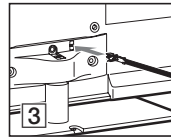
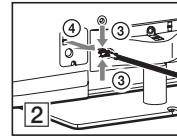
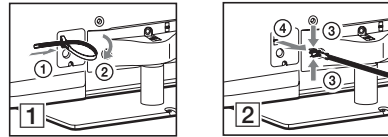


► Except KDL-46/40/32CX52x

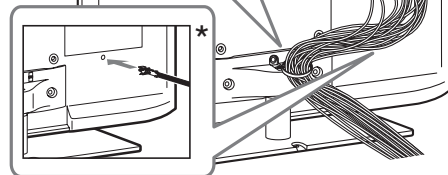
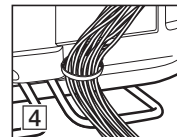
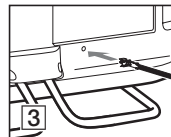
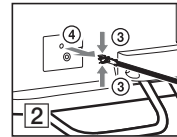
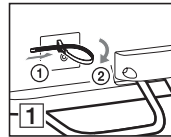


- Before bundling the cables, remove the cable holder from the AC cover (see step 1 and 2). Reuse the cable holder (see step 3) to bundle the other cables (see step 4).
- Do not bundle the AC power cord (mains lead) together with other cables.

KDL-55/46/40/37/32EX72x, KDL-46/40HX72x,
KDL-46/40/37/32EX52x, KDL-32EX42x

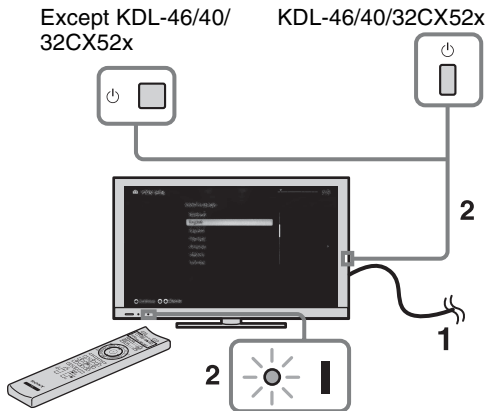


KDL-26/24/22EX32x



- * When installing on the wall, attach the cable holder under the terminals.

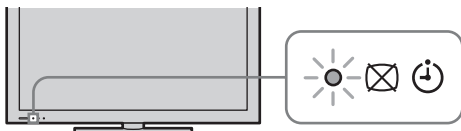
7: Performing the initial set-up



- 1 Connect the TV to your AC power outlet (mains socket).
- 2 Press on the TV. The **I** (power) indicator will light up in green. When you switch on the TV for the first time, the Language menu appears on the screen.



- When you turn on the TV for the first time, the TV requires some internal processing for optimization before you can perform the initial setup. There will be no picture and sound, and the timer indicator on the front of the TV blinks orange for about 40 seconds. Do not turn off the TV during this process. This process has been completed at the factory for some TVs.



3



Follow the instructions on the screen.

Satellite Auto Tuning:

The following procedures may be required depending on the area:

- 1 Please select “Preferred Satellite” or “General Satellite”.
- 2 For “Preferred Satellite”, select your preferred operator.

“Satellite Auto Tuning” automatically tunes in available satellite channels. Digital Satellite Equipment Control (DiSEqC) 1.0 management allows setting of up to four different channels. The following settings are independent for each connection. To set-up DiSEqC input in the “DiSEqC Control”, use “LNB Configuration”.

1 “Scan Type” and “Advanced Settings” (for common satellite setting- Satellite 1 to 4):

Allows you to set tuning settings in more detail to better find the type of services you would prefer to tune.

“**Scan Type**”: If no channel is found using “Network Scan”, try “Full Scan”.

“**Full Scan**”: Performs a complete frequency scan and guarantees tuning to all possible programmes for the currently set LNB configuration. Previously-tuned programmes will be lost.

“**Network Scan**”: Performs a scan in the transponders of a network (aka NIT scan). Since “Network Scan” is faster than “Full Scan”, it is recommended when tuning to a known network (normally associated with a satellite). A transponder must be specified, from which network information (other transponders) will be retrieved. Previously-tuned programmes will be lost.

2 “LNB Configuration” (for each satellite setting- Satellite 1 to 4):

In the case of a non-standard LNB (low-noise block), manual setting is available.

- In the case of a single satellite channel, you can leave it on the initial setting.
- For two satellite channels, you need to set “Toneburst A” (1st satellite) and “Toneburst B” (2nd satellite) in the “DiSEqC Control” setting.


- Or you can use DiSEqC command A (1st satellite) and B (2nd satellite), if your LNB or multi switch can handle these commands.
 - For four satellite channels, DiSEqC control A, B, C, and D is required.
- “LNB Low Band Frequency” and “LNB High Band Frequency”:**
- Specifies LNB frequency bands. Be sure to check your LNB documentation to set frequencies (normally appears as “L.O. frequency”).
 - The default values are for a universal LNB.
 - If your LNB can handle both bands (low and high), you can specify both. If it handles only one, specify low band.
- “22 kHz Tone”:** If your LNB is dual band (low and high bands), set to “Auto”. The TV will take care of everything automatically; otherwise, set to “Off”.
- “LNB Voltage”:** Specifies the set voltage for a dual polarisation LNB.
- 13/18V: default.
 - 14/19V: if LNB cable is over 60m long.
 - Off: if an external power supply can be used.

3 “Transponder” (for each satellite setting- Satellite 1 to 4):

There is no need to set the transponder when you select “Full Scan”.

“Scan for new services”:

- Tunes to a single transponder.
- This is an incremental scan, and it should be used in cases when a new transponder is added to a satellite.
- Previously-tuned programmes are kept and found ones are added to the program list of the satellite connection you are editing.

1 Press **HOME**, then select  > “Digital Set-up” > “Satellite Auto Tuning”.

2 Follow the instruction on the Satellite Auto Tuning.





- “Scan for new services” is unavailable while performing the initial set-up.
- When you scan for the new services, please check if the satellite signal is available.



Digital Auto Tuning: When you select “Cable”, we recommend that you select “Quick Scan” for quick tuning. Set “Frequency” and “Network ID” according to the information supplied from your cable provider. If no channel is found using “Quick Scan”, try “Full Scan” (though it may take some time).



- “Full Scan” may not be available depending on your region/country.

Programme Sorting: Changes the order of analogue channels stored in the TV.

1 Press  to select the channel you want to move to a new position, then press .

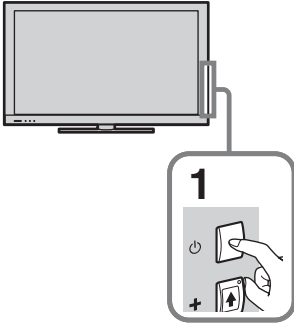
2 Press  to select the new position for the channel, then press .



- For satellite channels, select “Satellite Programme Sorting” in “Digital Set-up” of “Settings” to change the order of satellite channels in the same procedure above after initial set-up completed.
- You can also tune channels manually.

Using Your BRAVIA TV

Watching the TV



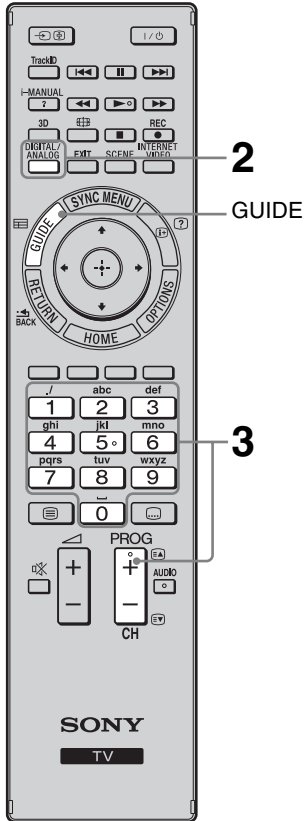
1 Turn on the TV.

Press  on the TV to turn on the TV.

2 Select a mode.



3 Select a TV channel.




To use Digital Electronic Programme Guide

Press **GUIDE** in digital mode to display the programme guide.



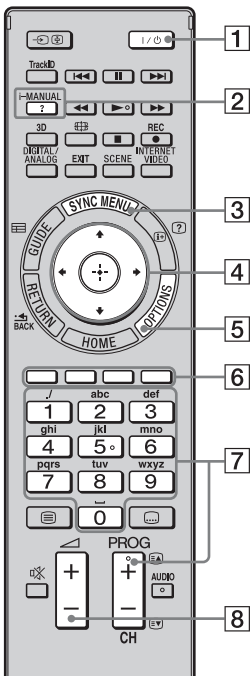
Use with **0-9** to select digital channels. For channel numbers 10 and above, press the next digit quickly.



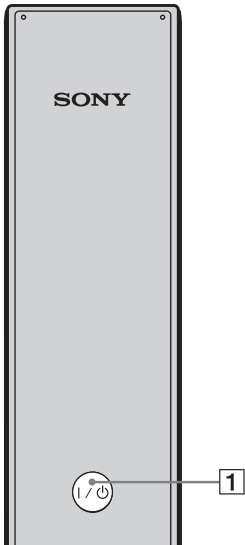
- The number 5, , **PROG +** and **AUDIO** buttons on the remote have a tactile dot. Use the tactile dots as a reference when operating the TV.

Parts and controls of the remote

Use the supplied remote to control your TV. Basic remote operations are explained here. For details on all of the remote function, press **i-MANUAL** and see the built-in manual (i-Manual) (page 20).



For KDL-55/46/40/37/32EX72x,
KDL-46/40HX72x



Rear of Remote Control

1 I/O

Press to turn the TV on and off from standby mode.

2 i-MANUAL

Displays the built-in manual (i-Manual).

3 SYNC MENU

Displays the BRAVIA Sync Menu to operate the BRAVIA Sync-compatible equipment that is connected to the TV.

4

Moves the on-screen cursor, and confirm the item.

5 OPTIONS

Displays a list of convenient functions and menu shortcuts. The menu items vary based on the current input and/or content.

6 Coloured buttons

When the coloured buttons are available, an operation guide appears on the screen.

7 PROG/CH +/-/Number buttons

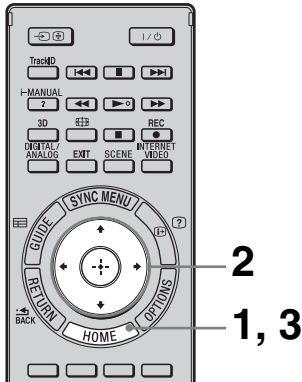
Select channels in the TV mode.

8

Adjusts the volume.

Selecting various functions and settings (Home Menu)

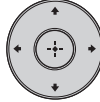
You can select all the features from the Home menu.
See page 19 for the Home menu map.



1 Press HOME.



2 Press $\uparrow/\downarrow/\leftarrow/\rightarrow/\oplus$ to select items.



To select items in the Home menu (e.g., selecting “Settings”)

① Press \leftarrow/\rightarrow to select “Settings”.

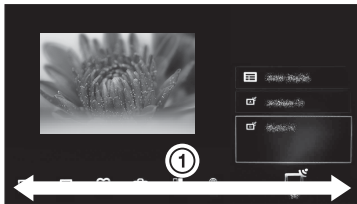
The contents of “Settings” are displayed on the right.

② Press \uparrow/\downarrow to select “Display”.

③ Press \oplus to launch the menu.












According to the screen instruction, press $\uparrow/\downarrow/\leftarrow/\rightarrow$ to select items and press \oplus to confirm.

3 Press HOME to exit.



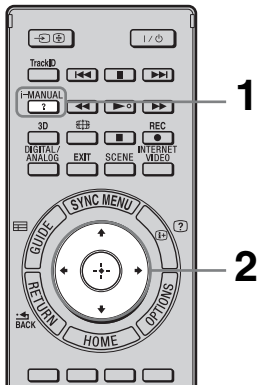
Home menu map

After pressing **HOME** on the remote, following icons are displayed as categories. The categories are available depending on your TV model, region, country and broadcasting conditions.

	TV	You can select a list of TV channels, or a programme guide.
	Media	You can enjoy photo/music/video content via USB devices or the home network.
	Inputs	You can select equipment connected to the TV.
	Favourites/History	Provides quick access to your frequently used and recently viewed items, such as TV channels, external inputs or your media files.
	Settings	Contains all of the necessary configurations to customise your TV settings.
	Widgets	Provides access to Widgets.
	Applications	You can enjoy various applications such as “Music Search”, “Internet Browser”, etc.
	Qriocity	Enable access to the “Qriocity” online service.
	Internet Content	You can enjoy Internet content services.
	Recommendations	Presents recommendations for programmes you may like, based on your viewing history.
	Recordings	You can enjoy timer recordings to a connected USB HDD device, and selection of recorded content to play.

Displaying Operating Instructions (i-Manual)

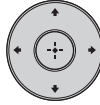
Operating instructions are built into your BRAVIA TV and can be displayed on the screen. To learn more about your TV features, access your i-Manual with the touch of a button.



1 Press i-MANUAL.



2 Press $\uparrow/\downarrow/\leftarrow/\rightarrow/\oplus$ to select items.



To select items in the i-Manual

① Press \uparrow/\downarrow to select an item.

The contents in the item are displayed on the right as the second layer.

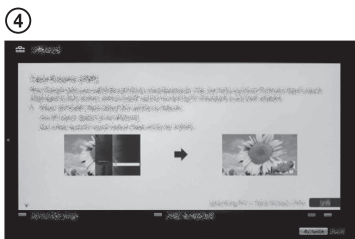
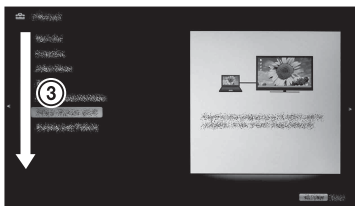
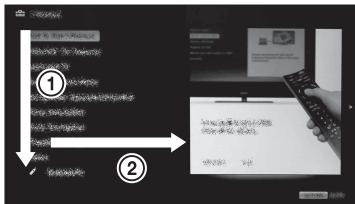
② Press \rightarrow to move to the second layer.

③ Press \uparrow/\downarrow to select an item from the second layer.

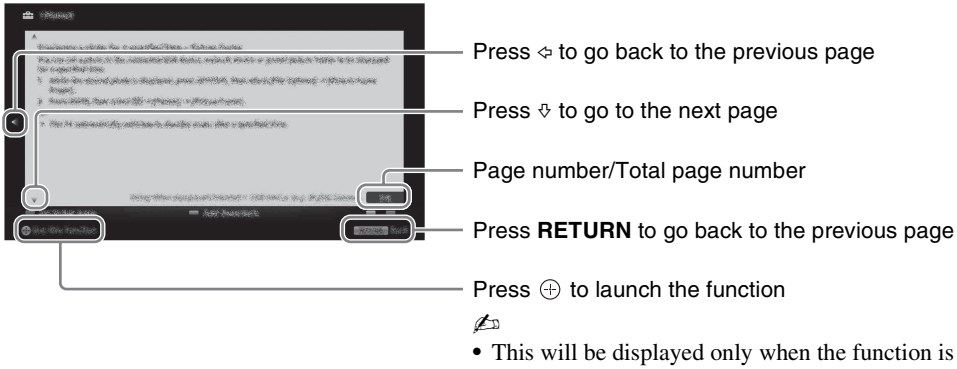
A digest of the item is displayed on the right. If the third layer is available, repeat this step to display the digest of the item.

④ Press \rightarrow to select an item.

The content is displayed.



Description of the i-Manual screen

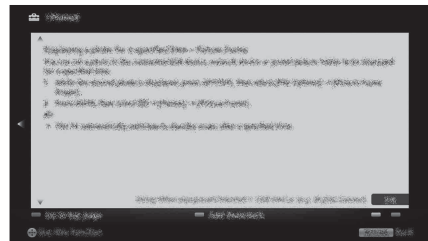


To use the bookmark

The i-Manual has a bookmark function. Pages can be bookmarked with coloured buttons, according to the instructions at the bottom of the screen. To access your registered bookmarks, go to the top page of the i-Manual and select “Bookmarks”.

To memorise the last displayed page

i-Manual memorises the last displayed page. When in the i-Manual screen, press **i-MANUAL** to return to the TV screen. If you press **i-MANUAL** again, the information you saw last time appears. For viewing from the top page of the i-Manual, return to the top page according to the instructions on the screen, or press **HOME** and select “i-Manual” of “Settings” in the Home menu.



- Last page memory is automatically reset when you switch the TV to standby mode.

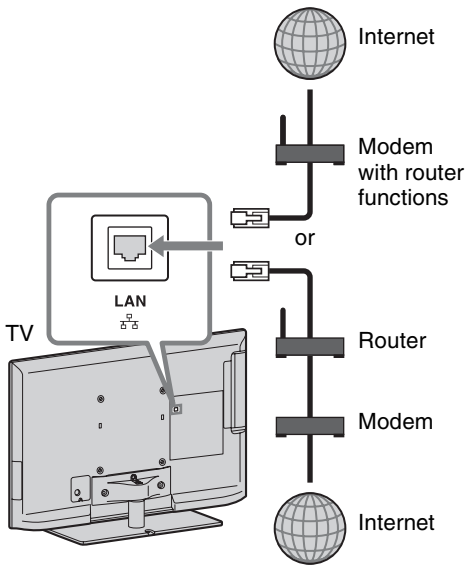
Network Setup

When you connect this TV to the Internet, you can enjoy multiple functions: displaying a photograph that shows its location on the map, enjoying Internet video, etc. For details on the functions, refer to the i-Manual.



- You will need to contract with an Internet service provider to connect to the Internet.

Preparing a wired network



- For LAN connections, use a Category 7 cable (not supplied).

Preparing a wireless LAN

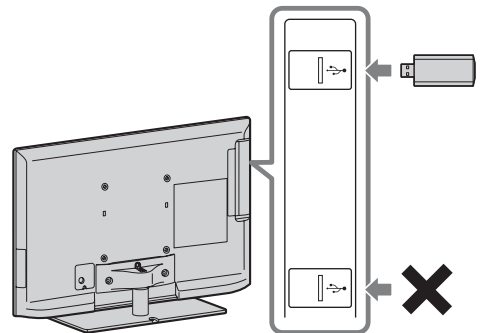
For KDL-46/40/32EX729, KDL-46/40/32EX728, KDL-46/40/32EX727, KDL-46/40/32EX726, KDL-26/24/22EX325:

For models with built-in wireless LAN device, you can access the Internet and your home network without the USB Wireless LAN Adapter UWA-BR100.

Except KDL-46/40/32EX729, KDL-46/40/32EX728, KDL-46/40/32EX727, KDL-46/40/32EX726, KDL-26/24/22EX325:

Wireless LAN Ready lets you easily access the Internet and your home network with the USB Wireless LAN Adapter UWA-BR100 (as of January 2010). By inserting the USB Wireless LAN Adapter into your TV's USB port, you can easily create a cable-free network.

Before setting up the wireless LAN function of the TV, be sure to set up a wireless LAN router.

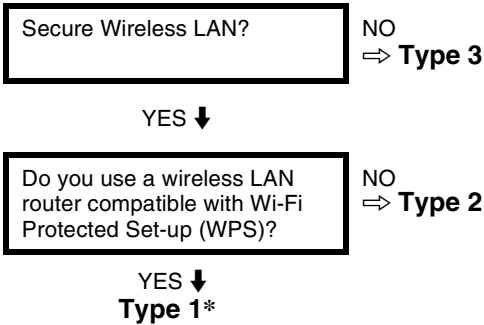


- The USB Wireless LAN Adapter is available as an optional accessory, depending on your TV model.

Setting up the Internet connection

Using the network feature you can connect the TV to the Internet. The set-up procedure differs depending on the type of network and LAN router. Before setting up the Internet connection, be sure to set up a LAN router. Check your wireless LAN environment using the following chart.

Wireless LAN



Wired LAN → Type 4

* Type 1 is easier to set up if your router has an automatic setting button, e.g. Air Station One-Touch Secure System (AOSS). Most of the latest routers have this function. Check your router.

Type 1: Follow the configuration for “Secured Network with Wi-Fi Protected Set-up (WPS)”.

Type 2: Follow the configuration for “Secured Network without Wi-Fi Protected Set-up (WPS)”.



Type 3: Follow the configuration for “Unsecured Network with Any Type of Wireless LAN Router”.

Type 4: Follow the configuration for “Wired network set-up”.

Type 1: Secured network with Wi-Fi Protected Set-up (WPS)


The WPS standard makes security of a wireless home network as straightforward as pressing the WPS button on the wireless LAN router. Before setting up a wireless LAN, check the location of the WPS button on the router and verify how to use it.

For security purpose, “WPS (PIN)” provides a PIN code for your router. PIN code is renewed every time you select “WPS (PIN)”.

- 1** Press **HOME**, then select  > “Network” > “Network Set-up”.
- 2** Select “Wireless Set-up”.
- 3** Select “WPS (Push Button)” for Push Button method or “WPS (PIN)” for PIN method.
 -  Button name of the WPS may differ depending on the router (e.g. AOSS button).
- 4** Follow the instructions on the set-up screen.

Type 2: Secured network without Wi-Fi Protected Set-up (WPS)

To set up a wireless LAN, SSID (wireless network name) and security key (WEP or WPA key) will be required. If you do not know them, consult the instruction manual of your router.

- 1** Press **HOME**, then select  > “Network” > “Network Set-up”.
- 2** Select “Wireless Set-up”.
- 3** Select “Scan”, then select a network from the list of scanned wireless networks.
- 4** Follow the instructions on the set-up screen.




- If you use WPS for network set-up, the security settings of the wireless LAN router activate, and any equipment previously connected to the wireless LAN in a non-secure status will be disconnected from the network.

In this case, activate the security settings of the disconnected equipment and then reconnect. Or, you can deactivate the security settings of the wireless LAN router, and then connect the equipment to a TV in a non-secure status.

Type 3: Unsecured network with any type of wireless LAN router

To set up a wireless LAN, SSID (wireless network name) will be required.


- 1 Press **HOME**, then select  > “Network” > “Network Set-up”.
- 2 Select “Wireless Set-up”.
- 3 Select “Scan”, then select a network from the list of scanned wireless networks.
- 4 Follow the instructions on the set-up screen.



- Security key (WEP or WPA key) will not be required because you do not need to select any security method in this procedure.


Type 4: Wired network set-up

Enter the respective alphanumeric values for your router if necessary. The items that need to be set (e.g. IP Address, Subnet Mask, DHCP) may differ depending on the Internet service provider or router. For details, refer to the instruction manuals provided by your Internet service provider, or those supplied with the router.

- 1 Press **HOME**, then select  > “Network” > “Network Set-up”.
- 2 Select “Wired Set-up”.
- 3 Select “Auto” to set the IP Address and proxy server automatically, or “Custom” to set them manually.
- 4 Follow the instructions on the set-up screen.


Viewing the network status

You can confirm your network status.

- 1 Press **HOME**, then select  > “Network” > “Network Set-up”.
- 2 Select “View Network Status”.


If you cannot connect to the Internet

Use the diagnosis to check possible causes for network connection failures, and settings.

- 1 Press **HOME**, then select  > “Network” > “Network Set-up”.
- 2 Select “View Network Status”.
- 3 Select “Check Connection”.
This may take a several minutes. You cannot cancel the diagnosis after selecting “Check Connection”.


Adjusting the server display settings

You can select home network servers to be displayed on the Home Menu. Up to 10 servers can be displayed in the Home Menu automatically.

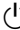
- 1 Press **HOME**, then select  > “Network” > “Home Network Setup”.
- 2 Select “Server Display Settings”.
- 3 Select the server you want to display on the Home Menu, and adjust the settings.


If you cannot connect to your home network

The TV detects if the server is being correctly recognised when you cannot connect it to your home network. If the diagnostic results indicate a failure, check possible causes, and network connections and settings.

- 1 Press **HOME**, then select  > “Network” > “Home Network Setup”.
- 2 Select “Server Diagnostics”.
The server diagnostic starts. When the server diagnostic is complete, the diagnostic result list appears.

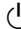

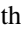
Troubleshooting

When the  (standby) indicator is flashing, count how many times it flashes (interval time is three seconds).

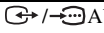
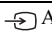
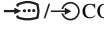


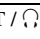



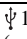
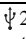



Press  on the TV to turn it off, disconnect the AC power cord (mains lead), and inform your dealer or Sony service centre of how the indicator flashes (number of flashes).

When the  (standby) indicator is not flashing, check the items in the tables as follows.

Also refer to “Troubleshooting” in the i-Manual. If the problem persists, have your TV serviced by qualified service personnel.

Condition	Explanation/Solution
There is no picture (screen is dark) and no sound.	<ul style="list-style-type: none"> • Check the antenna (aerial)/cable connection. • Connect the TV to the AC power (mains), and press  on the TV. • If the  (standby) indicator lights up in red, press .
Tiny black points and/or bright points appear on the screen.	<ul style="list-style-type: none"> • The screen is composed of pixels. Tiny black points and/or bright points (pixels) on the screen do not indicate a malfunction.
Some programmes cannot be tuned.	<ul style="list-style-type: none"> • Check the antenna (aerial) or dish. • The satellite cable might be short-circuited or there might be connection problems of the cable. Check the cable and connection and then turn the TV off with the Mains power On / Off switch, and turn it on again. • The frequency you entered is out of range. Consult the received satellite broadcasting company.
The TV turns off automatically (the TV enters standby mode).	<ul style="list-style-type: none"> • Check if the “Sleep Timer” is activated, or confirm the “Duration” setting of “On Timer”. • Check if the “Idle TV Standby” is activated. • Check if the “Presence Sensor” is activated. When no viewer is detected in front of the TV for a preset time, the picture automatically turns off, while leaving only the TV sound on. Additionally, after 30 minutes in picture off mode, the TV will switch to standby mode.
The remote does not function.	<ul style="list-style-type: none"> • Replace the batteries. • Your TV may be in SYNC mode. Press SYNC MENU, select “TV Control” and then select “Home (Menu)” or “Options” to control the TV.
The “Parental Lock” password has been forgotten.	<ul style="list-style-type: none"> • Enter 9999 for the PIN code. (PIN code 9999 is always accepted.)
The TV surrounds become warm.	<ul style="list-style-type: none"> • When the TV is used for an extended period, the TV surrounds become warm. You may feel hot when touching there by the hand.

Specifications

System	
Panel system	LCD (Liquid Crystal Display) Panel
TV system	Analogue: Depending on your country/area selection: B/G/H, D/K, L, I, M Digital: DVB-T/DVB-C Satellite: DVB-S/DVB-S2
Colour/video system	Analogue: PAL, PAL60 (only video input), SECAM, NTSC3.58, NTSC4.43 (only video input) Digital: MPEG-2 MP@ML/HL, H.264/MPEG-4 AVC MP/HP@L4
Channel coverage	Analogue: VHF: E2–E12/UHF: E21–E69/CATV: S1–S20/HYPER: S21–S41 D/K: R1–R12, R21–R69/L: F2–F10, B–Q, F21–F69/I: UHF B21–B69/M: A2-A13, A14-A79 Digital: VHF/UHF Satellite: IF Frequency 950-2150 MHz
Sound output	10 W + 10 W (KDL-55/46/40/37/32EX72x, KDL-46/40HX72x, KDL-46/40/37/32EX52x, KDL-46/40/32CX52x, KDL-32EX42x) 8 W + 8 W (KDL-26/24/22EX32x)
Input/Output jacks	
Antenna (aerial) cable	75 ohm external terminal for VHF/UHF
Satellite antenna (aerial)	Female F-Type Connector IEC169-24, 75 ohm. DiSeqC 1.0, LNB 13V/18V & 22 KHz tone
 AV1	21-pin scart connector (CENELEC standard) including audio/video input, RGB input and TV audio/video output.
 AV2	Video input (phono jack)
 COMPONENT IN	Supported formats: 1080p, 1080i, 720p, 576p, 576i, 480p, 480i Audio input (phono jacks)
HDMI IN1, 2, 3, 4 (except KDL-26/24/ 22EX32x)	Video: 1080/24p/30p, 1080p, 1080i, 720/24p/30p, 720p, 576p, 576i, 480p, 480i Audio: Two channel linear PCM: 32, 44.1 and 48 kHz, 16, 20 and 24 bits, Dolby Digital Analogue audio input (minijack) (HDMI IN4 only) PC Input ARC (Audio Return Channel) (HDMI IN1 only)
HDMI IN1, 2 (KDL-26/24/22EX32x only)	Video: 1080/24p/30p, 1080p, 1080i, 720/24p/30p, 720p, 576p, 576i, 480p, 480i Audio: Two channel linear PCM: 32, 44.1 and 48 kHz, 16, 20 and 24 bits, Dolby Digital Analogue audio input (minijack) (HDMI IN2 only) PC Input ARC (Audio Return Channel) (HDMI IN1 only)
 DIGITAL AUDIO OUT (OPTICAL)	Digital optical jack (Two channel linear PCM, Dolby Digital)
 AUDIO OUT / 	Audio output (stereo minijack) Headphones jack
 PC IN	PC Input (Mini D-sub 15-pin)  PC audio input (minijack)
 (KDL-26/24/22EX32x only)	USB port (support HDD Rec)
 1,  2 (HDD REC) (except KDL-26/24/ 22EX32x)	USB port, USB HDD device port ( 2 only)
	CAM (Conditional Access Module) slot
 LAN	10BASE-T/100BASE-TX connector (Depending on the operating environment of the network, connection speed may differ. 10BASE-T/100BASE-TX communication rate and communication quality are not guaranteed for this TV.)

Model name KDL-		55EX72x	46HX72x	46EX72x	46EX52x
Power and others					
Power requirements		220 V – 240 V AC, 50 Hz			
Energy Efficiency Class		A	A	A	A
Screen size (measured diagonally)		Approx. 138.8 cm/ 55 inches	Approx. 116.8 cm/ 46 inches	Approx. 116.8 cm/ 46 inches	Approx. 116.8 cm/ 46 inches
Power consumption	in “Home”/ “Standard” mode	113 W	83.0 W	81.0 W	68.0 W
	in “Shop”/ “Vivid” mode	177 W	153 W	133 W	114 W
Average annual energy consumption* ¹		165 kWh	115 kWh	118 kWh	99 kWh
Standby power consumption* ²		0.25 W (15 W in software / EPG update mode)	0.25 W (15 W in software / EPG update mode)	0.25 W (15 W in software / EPG update mode)	0.3 W (13 W in software / EPG update mode)
Display resolution		1,920 dots (horizontal) × 1,080 lines (vertical)			
Dimensions (Approx.) (w × h × d)					
with Table-Top Stand		126.9 × 79.9 × 31.5 cm	107.8 × 69.0 × 26.0 cm	107.8 × 69.0 × 26.0 cm	107.8 × 69.0 × 26.0 cm
without Table-Top Stand		126.9 × 76.9 × 4.1 cm	107.8 × 66.0 × 4.2 cm	107.8 × 66.0 × 4.2 cm	107.8 × 66.0 × 4.2 cm
Mass (Approx.)					
with Table-Top Stand		25.4 kg	18.8 kg	17.9 kg	17.8 kg
without Table-Top Stand		20.2 kg	14.4 kg	14.3 kg	14.2 kg
Supplied accessories		See “Checking the accessories” (page 8).			
Optional accessories		Wall-Mount Bracket: SU-WL500 3D Glasses: TDG-BR250/TDG-BR200/TDG-BR100/TDG-BR50 (KDL-55/46EX72x, KDL-46HX72x) Camera and Microphone Unit: CMU-BR100 USB Wireless LAN Adapter			
Operating temperature		0 °C – 40 °C			
Operating humidity		10 % – 80 % RH (non-condensing)			

Model name KDL-		46CX52x	40HX72x	40EX72x	40EX52x
Power and others					
Power requirements		220 V – 240 V AC, 50 Hz			
Energy Efficiency Class		C	B	A	A
Screen size (measured diagonally)		Approx. 116.8 cm/ 46 inches	Approx. 101.6 cm/ 40 inches	Approx. 101.6 cm/ 40 inches	Approx. 101.6 cm/ 40 inches
Power consumption	in “Home”/ “Standard” mode	128 W	85.0 W	64.0 W	65.0 W
	in “Shop”/ “Vivid” mode	204 W	135 W	121 W	113 W
Average annual energy consumption* ¹		187 kWh	118 kWh	93 kWh	95 kWh
Standby power consumption* ²		0.25 W (16 W in software / EPG update mode)	0.25 W (14 W in software / EPG update mode)	0.25 W (15 W in software / EPG update mode)	0.3 W (13 W in software / EPG update mode)
Display resolution		1,920 dots (horizontal) × 1,080 lines (vertical)			
Dimensions (Approx.) (w × h × d)					
with Table-Top Stand		112.2 × 71.2 × 27.5 cm	94.3 × 61.5 × 21.0 cm	94.3 × 61.6 × 25.0 cm	94.3 × 61.6 × 25.0 cm
without Table-Top Stand		112.2 × 68.2 × 7.4 cm	94.3 × 58.6 × 4.2 cm	94.3 × 58.6 × 4.2 cm	94.3 × 58.6 × 4.2 cm
Mass (Approx.)					
with Table-Top Stand		20.7 kg	15.4 kg	14.4 kg	14.4 kg
without Table-Top Stand		17.1 kg	11.6 kg	11.2 kg	11.2 kg
Supplied accessories		See “Checking the accessories” (page 8).			
Optional accessories		Wall-Mount Bracket: SU-WL500 3D Glasses: TDG-BR250/TDG-BR200/TDG-BR100/TDG-BR50 (KDL-40HX72x, KDL-40EX72x) Camera and Microphone Unit: CMU-BR100 USB Wireless LAN Adapter			
Operating temperature		0 °C – 40 °C			
Operating humidity		10% – 80% RH (non-condensing)			

Model name KDL-		40CX52x	37EX72x	37EX52x	32EX72x
Power and others					
Power requirements		220 V – 240 V AC, 50 Hz			
Energy Efficiency Class		C	A	A	B
Screen size (measured diagonally)		Approx. 101.6 cm/ 40 inches	Approx. 94.0 cm/ 37 inches	Approx. 94.0 cm/ 37 inches	Approx. 80.1 cm/ 32 inches
Power consumption	in “Home”/ “Standard” mode	120 W	56.0 W	56.0 W	59.0 W
	in “Shop”/ “Vivid” mode	181 W	105 W	98 W	101 W
Average annual energy consumption* ¹		175 kWh	82 kWh	78 kWh	86 kWh
Standby power consumption* ²		0.25 W (15 W in software / EPG update mode)	0.25 W (17 W in software / EPG update mode)	0.3 W (16.5 W in software / EPG update mode)	0.25 W (16 W in software / EPG update mode)
Display resolution		1,920 dots (horizontal) × 1,080 lines (vertical)			
Dimensions (Approx.) (w × h × d)					
with Table-Top Stand		99.1 × 63.6 × 25.0 cm	87.8 × 57.9 × 25.0 cm	87.7 × 57.9 × 25.0 cm	75.5 × 51.0 × 21.6 cm
without Table-Top Stand		99.1 × 60.6 × 7.1 cm	87.8 × 54.9 × 4.2 cm	87.7 × 54.9 × 4.2 cm	75.5 × 48.0 × 4.2 cm
Mass (Approx.)					
with Table-Top Stand		16.3 kg	13.3 kg	13.3 kg	10.4 kg
without Table-Top Stand		12.9 kg	10.1 kg	10.1 kg	7.9 kg
Supplied accessories		See “Checking the accessories” (page 8).			
Optional accessories		Wall-Mount Bracket: SU-WL500 3D Glasses: TDG-BR250/TDG-BR200/TDG-BR100/TDG-BR50 (KDL-37/32EX72x) Camera and Microphone Unit: CMU-BR100 USB Wireless LAN Adapter			
Operating temperature		0 °C – 40 °C			
Operating humidity		10% – 80% RH (non-condensing)			

Model name KDL-		32EX52x	32EX42x	32CX52x
Power and others				
Power requirements		220 V – 240 V AC, 50 Hz		
Energy Efficiency Class		B	B	C
Screen size (measured diagonally)		Approx. 80.1 cm/32 inches	Approx. 80.0 cm/32 inches	Approx. 80.1 cm/32 inches
Power consumption	in “Home”/ “Standard” mode	56.0 W	56.0 W	73.0 W
	in “Shop”/ “Vivid” mode	88 W	88 W	112 W
Average annual energy consumption* ¹		82 kWh	82 kWh	107 kWh
Standby power consumption* ²		0.3 W (17 W in software / EPG update mode)	0.3 W (17 W in software / EPG update mode)	0.25 W (15 W in software / EPG update mode)
Display resolution		1,920 dots (horizontal) × 1,080 lines (vertical)	1,366 dots (horizontal) × 768 lines (vertical)	1,920 dots (horizontal) × 1,080 lines (vertical)
Dimensions (Approx.) (w × h × d)				
with Table-Top Stand		75.5 × 51.0 × 21.6 cm	75.5 × 51.0 × 21.6 cm	79.9 × 53.2 × 23.0 cm
without Table-Top Stand		75.5 × 48.0 × 4.2 cm	75.5 × 48.0 × 4.2 cm	79.9 × 50.2 × 7.0 cm
Mass (Approx.)				
with Table-Top Stand		10.2 kg	10.2 kg	11.4 kg
without Table-Top Stand		7.7 kg	7.7 kg	8.7 kg
Supplied accessories		See “Checking the accessories” (page 8).		
Optional accessories		Wall-Mount Bracket: SU-WL500 Camera and Microphone Unit: CMU-BR100 USB Wireless LAN Adapter		
Operating temperature		0 °C – 40 °C		
Operating humidity		10% – 80% RH (non-condensing)		

Model name KDL-		26EX32x	24EX32x	22EX32x
Power and others				
Power requirements		220 V – 240 V AC, 50 Hz		
Energy Efficiency Class		B	B	B
Screen size (measured diagonally)		Approx. 66.1 cm/ 26 inches	Approx. 61.0 cm/ 24 inches	Approx. 54.8 cm/ 22 inches
Power consumption	in “Home”/ “Standard” mode	38.0 W	35.0 W	32.0 W
	in “Shop”/ “Vivid” mode	63 W	62 W	52 W
Average annual energy consumption*1		55 kWh	51 kWh	47 kWh
Standby power consumption*2		0.35 W (13 W in software / EPG update mode)	0.35 W (13 W in software / EPG update mode)	0.35 W (13 W in software / EPG update mode)
Display resolution		1,366 dots (horizontal) × 768 lines (vertical)	1,920 dots (horizontal) × 1,080 lines (vertical)	1,366 dots (horizontal) × 768 lines (vertical)
Dimensions (Approx.) (w × h × d)				
with Table-Top Stand		63.1 × 42.1 × 18.2 cm	58.3 × 39.1 × 18.2 cm	52.9 × 36.2 × 17.2 cm
without Table-Top Stand		63.1 × 40.6 × 4.2 cm	58.3 × 37.6 × 4.2 cm	52.9 × 34.7 × 4.2 cm
Mass (Approx.)				
with Table-Top Stand		7.2 kg	6.2 kg	5.1 kg
without Table-Top Stand		6.1 kg	5.2 kg	4.1 kg
Supplied accessories		See “Checking the accessories” (page 8).		
Optional accessories		Wall-Mount Bracket: SU-WL100 Camera and Microphone Unit: CMU-BR100 USB Wireless LAN Adapter		
Operating temperature		0 °C – 40 °C		
Operating humidity		10% – 80% RH (non-condensing)		

*1 Energy consumption per year, based on the power consumption of the television operating 4 hours per day for 365 days. The actual energy consumption will depend on how the television is used.

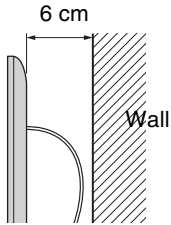
*2 Specified standby power is reached after the TV finishes necessary internal processes.

Design and specifications are subject to change without notice.

Installing the Accessories (Wall-Mount Bracket)

To Customers:

When using the SU-WL500 and SU-WL100 Wall-Mount Bracket, the space between the wall and the TV will be 6 cm. Use this space to route cables to the TV.



For product protection and safety reasons, Sony strongly recommends that installing of your TV be performed by Sony dealers or licensed contractors. Do not attempt to install it yourself.

To Sony Dealers and Contractors:

Provide full attention to safety during the installation, periodic maintenance and examination of this product.

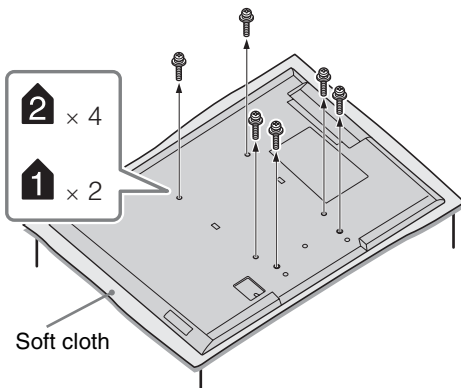
Your TV can be installed using the SU-WL500 (page 31) and SU-WL100 (page 31) Wall-Mount Bracket (sold separately).

- Refer to the Instructions supplied with the Wall-Mount Bracket to properly carry out the installation.
- Refer to “Detaching the Table-Top Stand from the TV” (page 9).

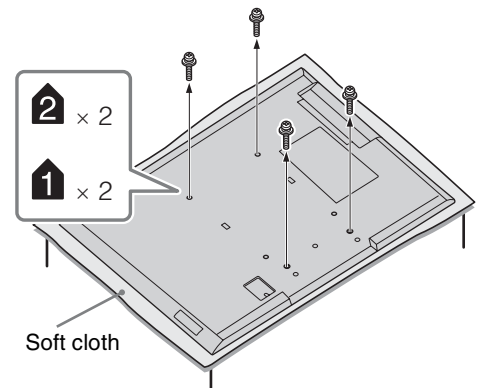
Sufficient expertise is required for installing this product, especially to determine the strength of the wall for withstanding the TV's weight. Be sure to entrust the attachment of this product to the wall to Sony dealers or licensed contractors and pay adequate attention to safety during the installation. Sony is not liable for any damage or injury caused by mishandling or improper installation.

When installing the TV on the wall, remove the screws from the rear of the TV. The screws and number of screws are available depending on the TV model. (They are fastened in the screw holes for wall mounting.) Be sure to store the removed screws in a safe place, keeping them away from children.

► For KDL-55EX72x



► For KDL-46/40HX72x, KDL-46/40/37/32EX72x, KDL-46/40/37/32EX52x, KDL-32EX42x

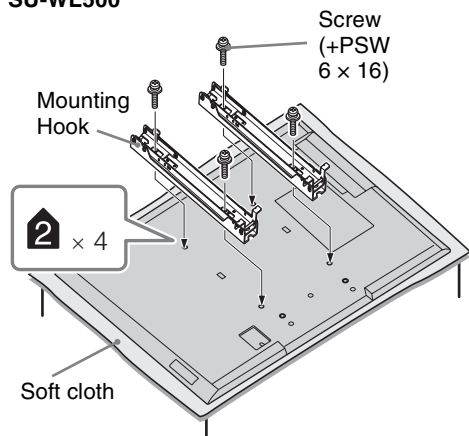


- When removing the Table-Top Stand from the TV, lay the display face down on a stable work surface that is larger than the TV.
- To prevent damaging the surface of the LCD display, make sure to place a soft cloth on the work surface.

SU-WL500, SU-WL100

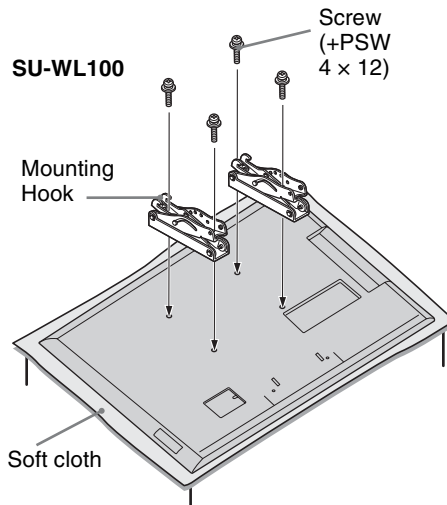
For KDL-55/46/40/37/32EX72x,
KDL-46/40HX72x,
KDL-46/40/37/32EX52x,
KDL-46/40/32CX52x,
KDL-32EX42x

SU-WL500



For KDL-26/24/22EX32x

SU-WL100



- Attach the Mounting Hook using the four screws supplied with the Wall-Mount Bracket.
- When attaching the Table-Top Stand again, be sure to fasten the screws (previously removed) to the original holes on the rear of the TV.

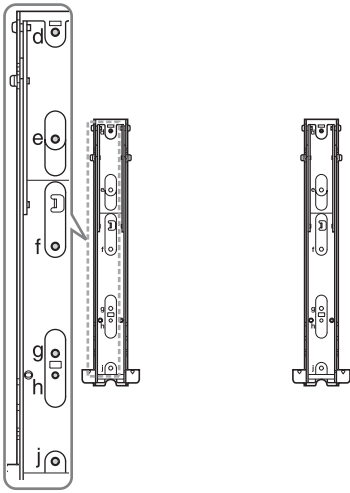
Screw and Hook locations diagram/table

Model Name KDL-	Screw location	Hook location
	SU-WL500	SU-WL500
55EX72x	e, j	b
46HX72x/46EX72x/46EX52x	e, j	b
46CX52x	d, g	b
40HX72x/40EX72x/40EX52x	e, j	b
40CX52x	d, g	b
37EX72x/37EX52x	e, j	b
32EX72x/32EX52x/32EX42x/32CX52x	e, g	c
		SU-WL100
26EX32x	-	a
24EX32x	-	a
22EX32x	-	b

SU-WL500

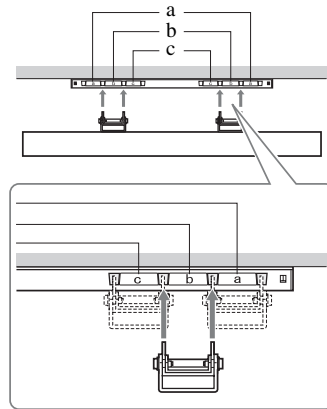
Screw location

When installing the Mounting Hook on the TV.



Hook location

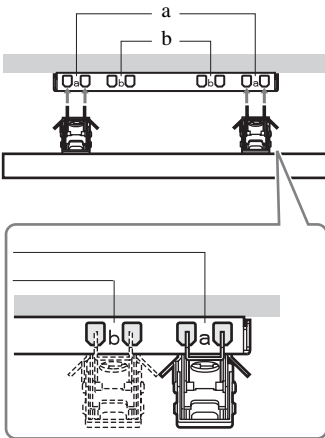
When installing the TV onto the Base Bracket.



SU-WL100

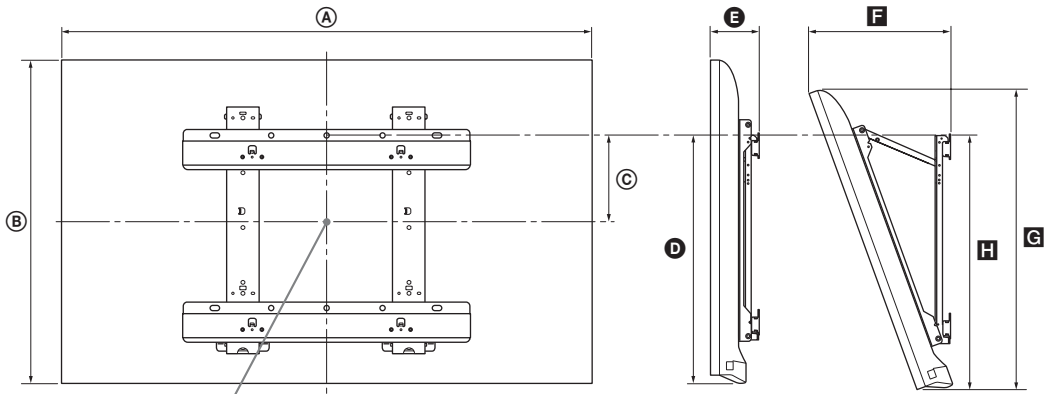
Hook location

When installing the TV onto the Base Bracket.



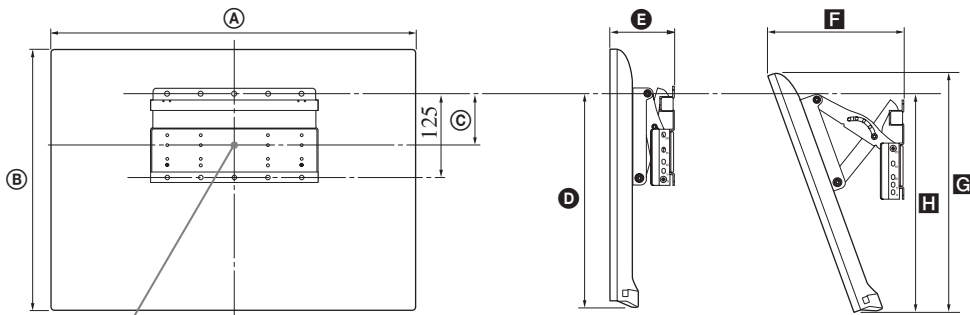
TV installation dimensions table

① SU-WL500



Screen centre point

② SU-WL100



Screen centre point

Unit: cm

Model Name KDL-	Display dimensions		Screen centre dimension C	Length for each mounting angle				
				Angle (0°)		Angle (20°)		
	A	B		D	E	F	G	H
① SU-WL500								
55EX72x	126.9	76.9	6.5	46.5	9.0	32.2	71.8	47.2
46HX72x	107.8	66.0	12.0	46.5	9.1	28.6	61.5	47.1
46EX72x	107.8	66.0	12.0	46.5	9.1	28.6	61.6	47.2
46EX52x	107.8	66.0	12.0	46.5	9.1	28.6	61.5	47.2
46CX52x	112.2	68.2	8.4	43.2	13.4	34.5	64.2	45.5
40HX72x	94.3	58.6	15.7	46.5	9.1	26.1	54.5	47.1
40EX72x	94.3	58.6	15.7	46.5	9.1	26.1	54.6	47.2
40EX52x	94.3	58.6	15.7	46.5	9.1	26.0	54.5	47.2
40CX52x	99.1	60.6	12.2	43.2	13.1	31.9	57.0	45.5
37EX72x	87.8	54.9	17.5	46.5	9.1	24.8	51.1	47.2
37EX52x	87.7	54.9	17.5	46.5	9.1	24.7	51.0	47.1
32EX72x	75.5	48.0	16.1	41.6	9.1	24.1	44.6	42.7
32EX52x/ 32EX42x	75.5	48.0	16.1	41.6	9.1	24.1	44.6	42.6
32CX52x	79.9	50.2	17.2	43.2	13.0	27.9	47.3	45.4
② SU-WL100								
26EX32x	63.1	40.6	7.8	29.5	9.5	20.4	37.4	26.3
24EX32x	58.3	37.6	9.5	29.6	9.4	19.3	34.6	27.6
22EX32x	52.9	34.7	10.8	29.5	9.3	18.2	31.9	27.6

Figures in the table may differ slightly depending on the installation.

WARNING

The wall that the TV will be installed should be capable of supporting a weight of at least four times that of the TV. Refer to “Specifications” (page 26-29) for its weight.

(Continued) **33** GB

Safety Information

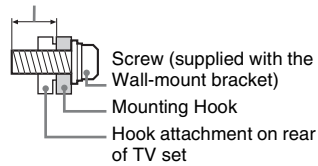
Installation/Set-up

Install and use the TV set in accordance with the instructions as follows in order to avoid any risk of fire, electrical shock or damage and/or injuries.

Installation

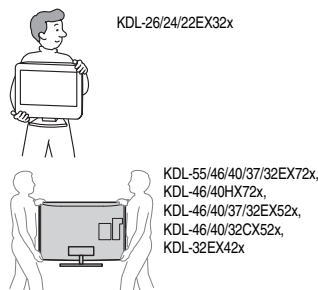
- The TV set should be installed near an easily accessible mains socket.
- Place the TV set on a stable, level surface.
- Only qualified service personnel should carry out wall installations.
- For safety reasons, it is strongly recommended that you use Sony accessories, including:
 - Wall Mount Bracket: SU-WL500 (except KDL-26/24/22EX32x) SU-WL100 (KDL-26/24/22EX32x)
- Be sure to use the screws supplied with the Wall-mount bracket when attaching the mounting hooks to the TV set. The supplied screws are designed so that they are 8 mm to 12 mm in length when measured from the attaching surface of the mounting hook. The diameter and length of the screws differ depending on the Wall-mount bracket model. Use of screws other than those supplied may result in internal damage to the TV set or cause it to fall, etc.

8 mm - 12 mm



Transporting

- Before transporting the TV set, disconnect all cables.
- Two or three people are needed to transport a large TV set.
- When transporting the TV set by hand, hold it as shown in the illustration. Do not put stress on the LCD panel and the frame around the screen.

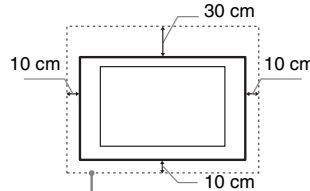


- When transporting the TV set, do not subject it to jolts or excessive vibration.
- When transporting the TV set for repairs or when moving, pack it using the original carton and packing material.

Ventilation

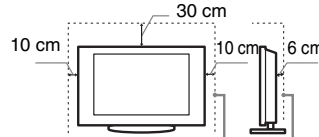
- Never cover the ventilation holes or insert anything in the cabinet.
- Leave space around the TV set as shown below.
- It is strongly recommended that you use a Sony wall-mount bracket in order to provide adequate air-circulation.

Installed on the wall



Leave at least this space around the set.

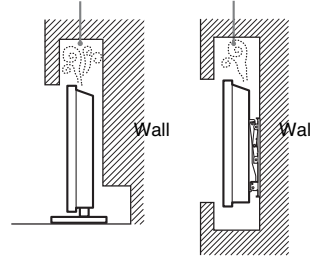
Installed with stand



Leave at least this space around the set.

- To ensure proper ventilation and prevent the collection of dirt or dust:
 - Do not lay the TV set flat, install upside down, backwards, or sideways.
 - Do not place the TV set on a shelf, rug, bed or in a closet.
 - Do not cover the TV set with a cloth, such as curtains, or items such as newspapers, etc.
 - Do not install the TV set as shown below.

Air circulation is blocked.



Mains lead

Handle the mains lead and socket as follows in order to avoid any risk of fire, electrical shock or damage and/or injuries:

- Use only mains leads supplied by Sony, not other suppliers.
- Insert the plug fully into the mains socket.
- Operate the TV set on a 220-240 V AC supply only.
- When wiring cables, be sure to unplug the mains lead for your safety and take care not to catch your feet on the cables.
- Disconnect the mains lead from the mains socket before working on or moving the TV set.
- Keep the mains lead away from heat sources.
- Unplug the mains plug and clean it regularly. If the plug is covered with dust and it picks up moisture, its insulation may deteriorate, which could result in a fire.

Notes

- Do not use the supplied mains lead on any other equipment.
- Do not pinch, bend, or twist the mains lead excessively. The core conductors may be exposed or broken.
- Do not modify the mains lead.
- Do not put anything heavy on the mains lead.
- Do not pull on the mains lead itself when disconnecting the mains lead.
- Do not connect too many appliances to the same mains socket.
- Do not use a poor fitting mains socket.

Prohibited Usage

Do not install/use the TV set in locations, environments or situations such as those listed below, or the TV set may malfunction and cause a fire, electrical shock, damage and/or injuries.

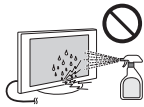
Location:

- Outdoors (in direct sunlight), at the seashore, on a ship or other vessel, inside a vehicle, in medical institutions, unstable locations, near water, rain, moisture or smoke.
- If the TV is placed in the changing room of a public bath or hot spring, the TV may be damaged by airborne sulfur, etc.



- For best picture quality, do not expose the screen to direct illumination or sunlight.
- Avoid moving the TV from a cold area to a warm area. Sudden room temperature changes may cause moisture condensation. This may cause the TV to show poor picture and/or poor colour. Should this occur, allow moisture to evaporate completely before powering the TV on.

- Never spray water or detergent directly on the TV set. It may drip to the bottom of the screen or exterior parts and enter the TV set, and may cause damage to the TV set.



Environment:

- Places that are hot, humid, or excessively dusty; where insects may enter; where it might be exposed to mechanical vibration, near flammable objects (candles, etc). The TV set shall not be exposed to dripping or splashing and no objects filled with liquids, such as vases, shall be placed on the TV.
- Do not place the TV in a humid or dusty space, or in a room with oily smoke or steam (near cooking tables or humidifiers). Fire, electric shock, or warping may result.



- Do not install the TV in places subject to extreme temperature such as in direct sunlight, near a radiator or a heating vent. The TV may overheat in such condition which can cause deformation of the enclosure and/or TV malfunction.



Situation:

- Do not use when your hands are wet, with the cabinet removed, or with attachments not recommended by the manufacturer. Disconnect the TV set from mains socket and aerial during lightning storms.
- Do not install the TV so that it sticks out into an open space. Injury or damage from a person or object bumping into the TV may result.



Broken pieces:

- Do not throw anything at the TV set. The screen glass may break by the impact and cause serious injury.
- If the surface of the TV set cracks, do not touch it until you have unplugged the mains lead. Otherwise electric shock may result.

When not in use

- If you will not be using the TV set for several days, the TV set should be disconnected from the mains for environmental and safety reasons.
- As the TV set is not disconnected from the mains when the TV set is just turned off, pull the plug from the mains to disconnect the TV set completely.
- However, some TV sets may have features that require the TV set to be left in standby to work correctly.

For children

- Do not allow children to climb on the TV set.
- Keep small accessories out of the reach of children, so that they are not mistakenly swallowed.

If the following problems occur...

Turn off the TV set and unplug the mains lead immediately if any of the following problems occur.

Ask your dealer or Sony service centre to have it checked by qualified service personnel.

When:

- Mains lead is damaged.
- Poor fitting of mains socket.
- TV set is damaged by being dropped, hit or having something thrown at it.
- Any liquid or solid object falls through openings in the cabinet.

Warning

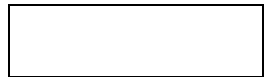
To prevent the spread of fire, keep candles or other open flames away from this product at all time.





For useful information about Sony products

<http://www.sony-europe.com/myproduct/>



4-269-996-E5(1)

<http://www.sony.net/>

© 2011 Sony Corporation